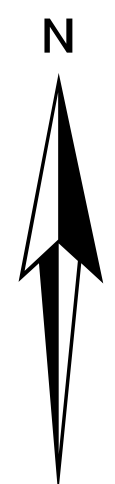


Cardinal Valley Neighborhood Association

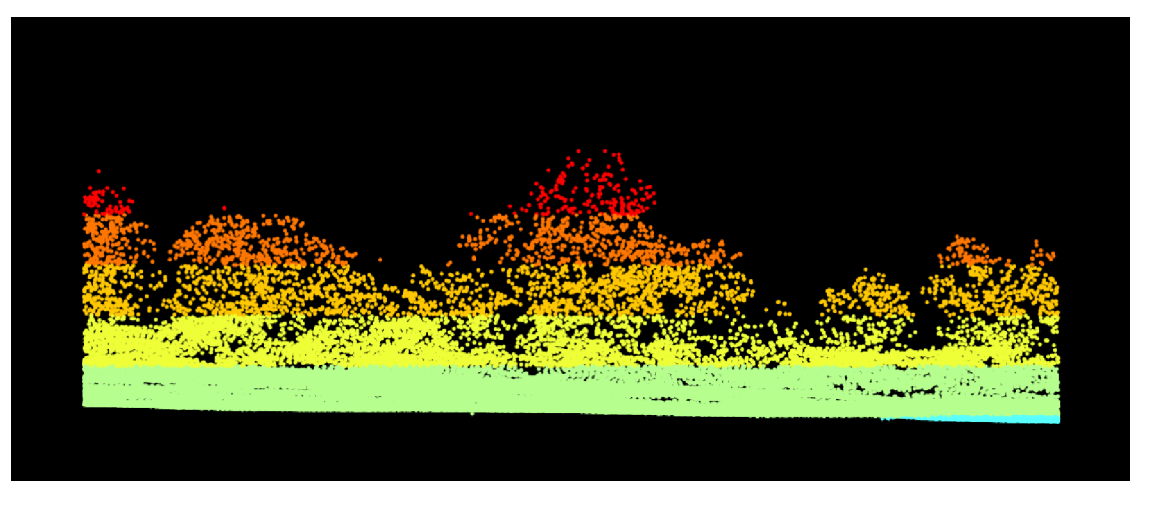
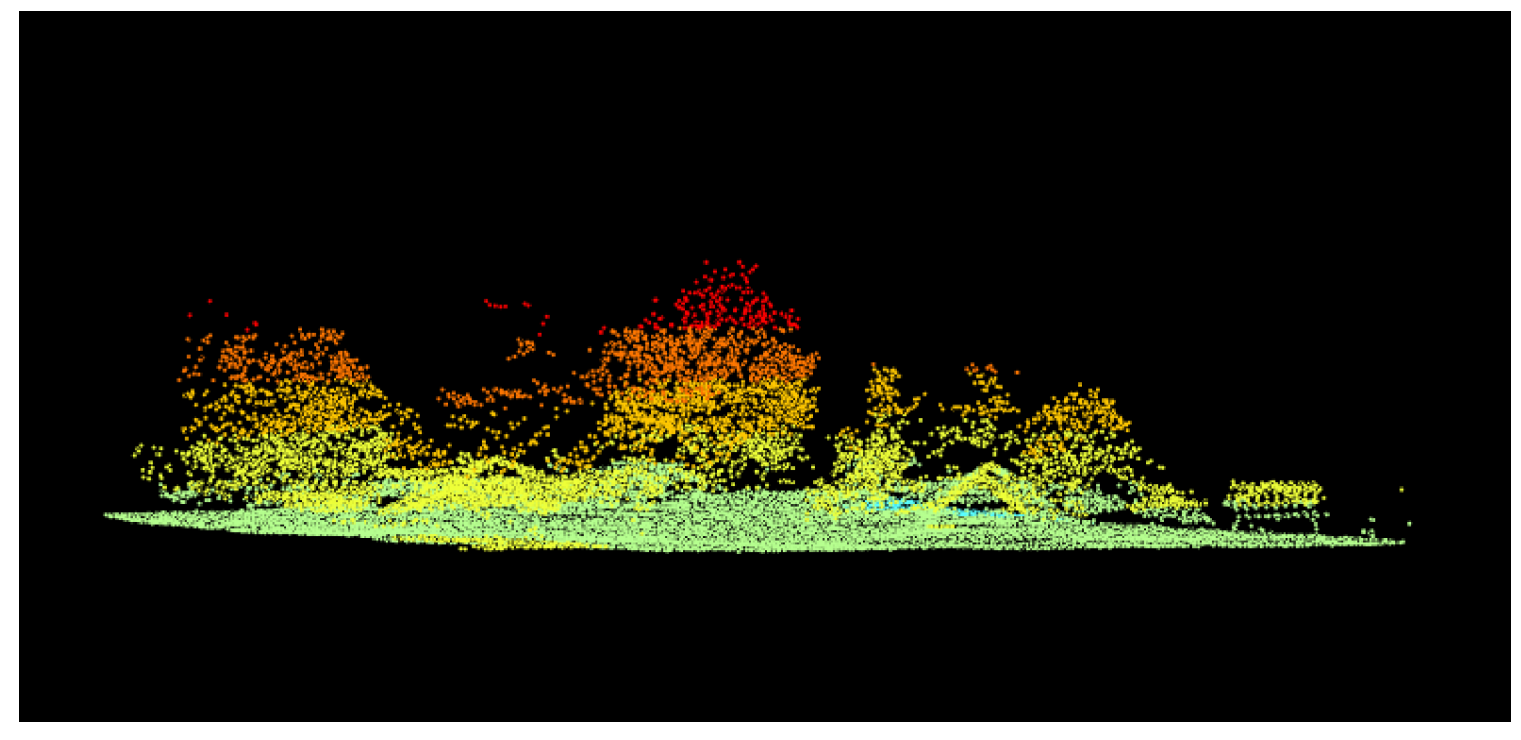
Lexington, Kentucky
Estimated Tree Canopy Cover



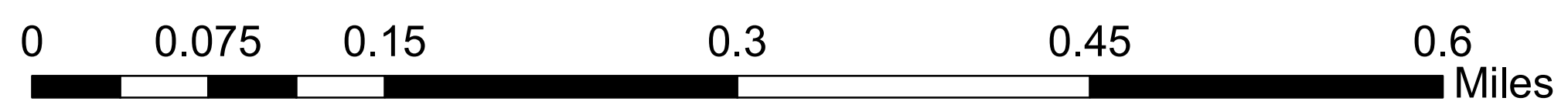
Legend

- Tree Canopy
- Selected trees (heights in feet)

Neighborhood area: 335.89 acres
 2013 land use canopy area: 108.87 acres
 2014 NAIP imagery using NDVI 0.3: 87 acres (26% of total area)
 2016 NAIP imagery using NDVI 0.3: 48.8 acres (14.5% of total area)



Roadside tree canopy in Cardinal Valley.



Map by Nicole Funk, November 2017, for NRE 355.
 Data acquired from Lexington's Open Data Portal, OpenStreetMap, LFUCG and Davey Resource Group, and National Agriculture Imagery Program
 Coordinate System: NAD 1983 StatePlane Kentucky FIPS 1600 Feet
 Area of Cardinal Valley Neighborhood Association: 335.8301 acres