






# Martin Luther King Neighborhood Association

## Lexington, Kentucky

### Estimated Tree Canopy and Points of Interest

2014 NAIP: 16.27 acres; 12.30% of neighborhood area; NDVI value used: 0.3  
 2016 NAIP: 24.12 acres; 18.22% of neighborhood area; NDVI value used: 0.15  
 Landcover Layer: 30.37 acres; 22.95% of neighborhood area

#### Legend

-  MLK Boundary
  -  Estimated Tree Canopy from NDVI analysis using value of .15
  -  Is big tree
  -  Is tree canopy
  -  POI
- CRS: EPSG 3089  
 Neighborhood area: 132.39 acres



Doodles Breakfast and Lunch



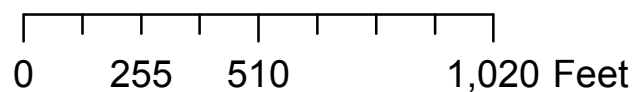
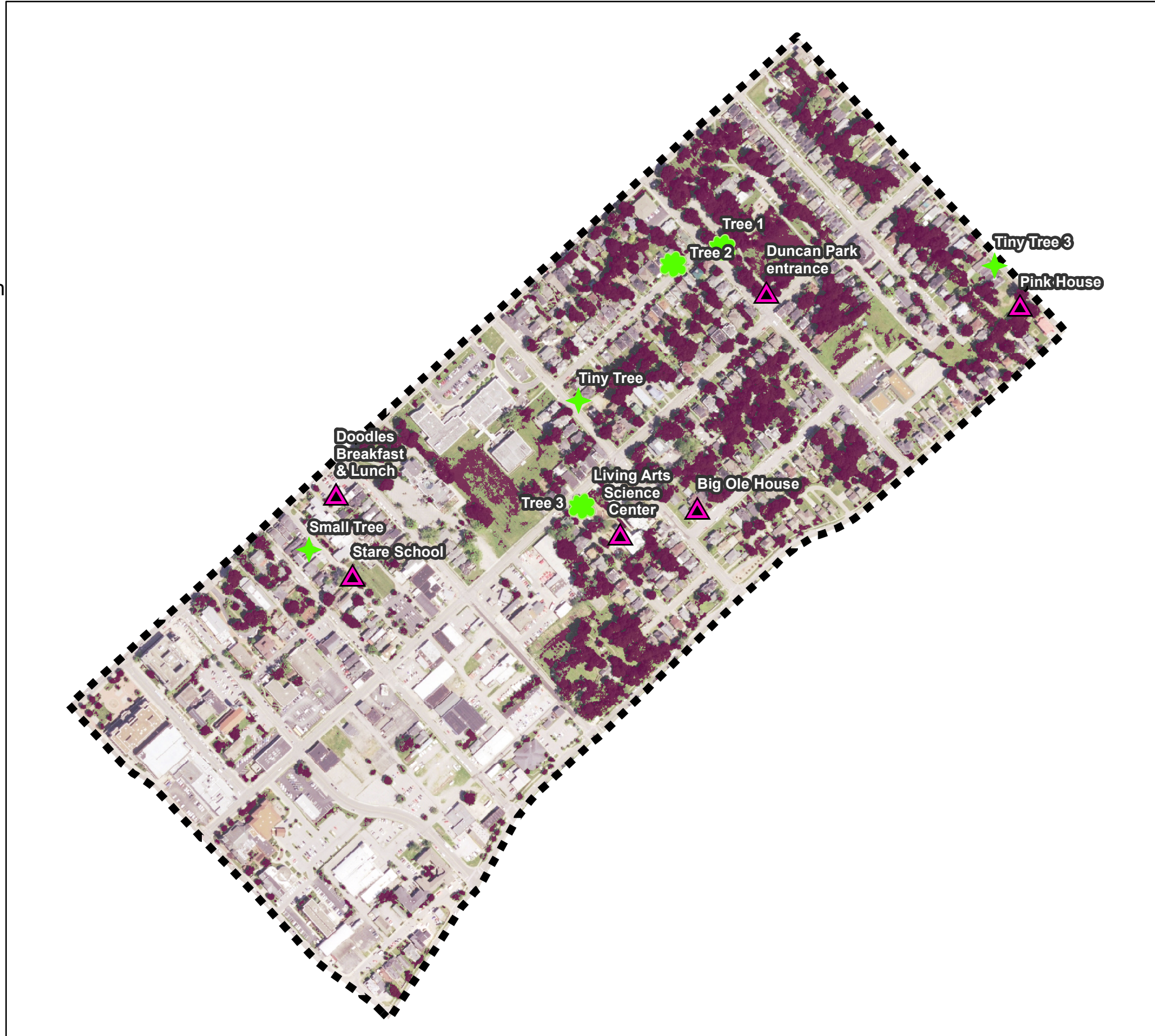
Tiny Tree



Duncan Park Entrance



Tree 2



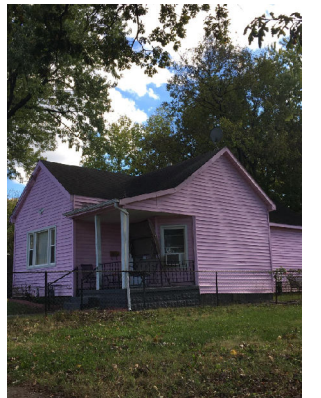
Tree 3



Small Tree



Tiny Tree 2



Pink House



Big Ole House

By Emily Ingram, October 4, 2017 for NRE 355  
 Data acquired from Neighborhood Association polygons, street centerlines, park polygons were downloaded from Lexington's Open Data Portal  
 Inside New Circle and area of interest polygons were derived from the above datasets  
 Building footprint polygons were downloaded from <http://www.openstreetmap.org/> and are copyright OpenStreetMap Contributors.  
 Land cover raster dataset from the "Urban Tree Canopy Assessment and Planting Plan" created by the LFUCG and Davey Resource