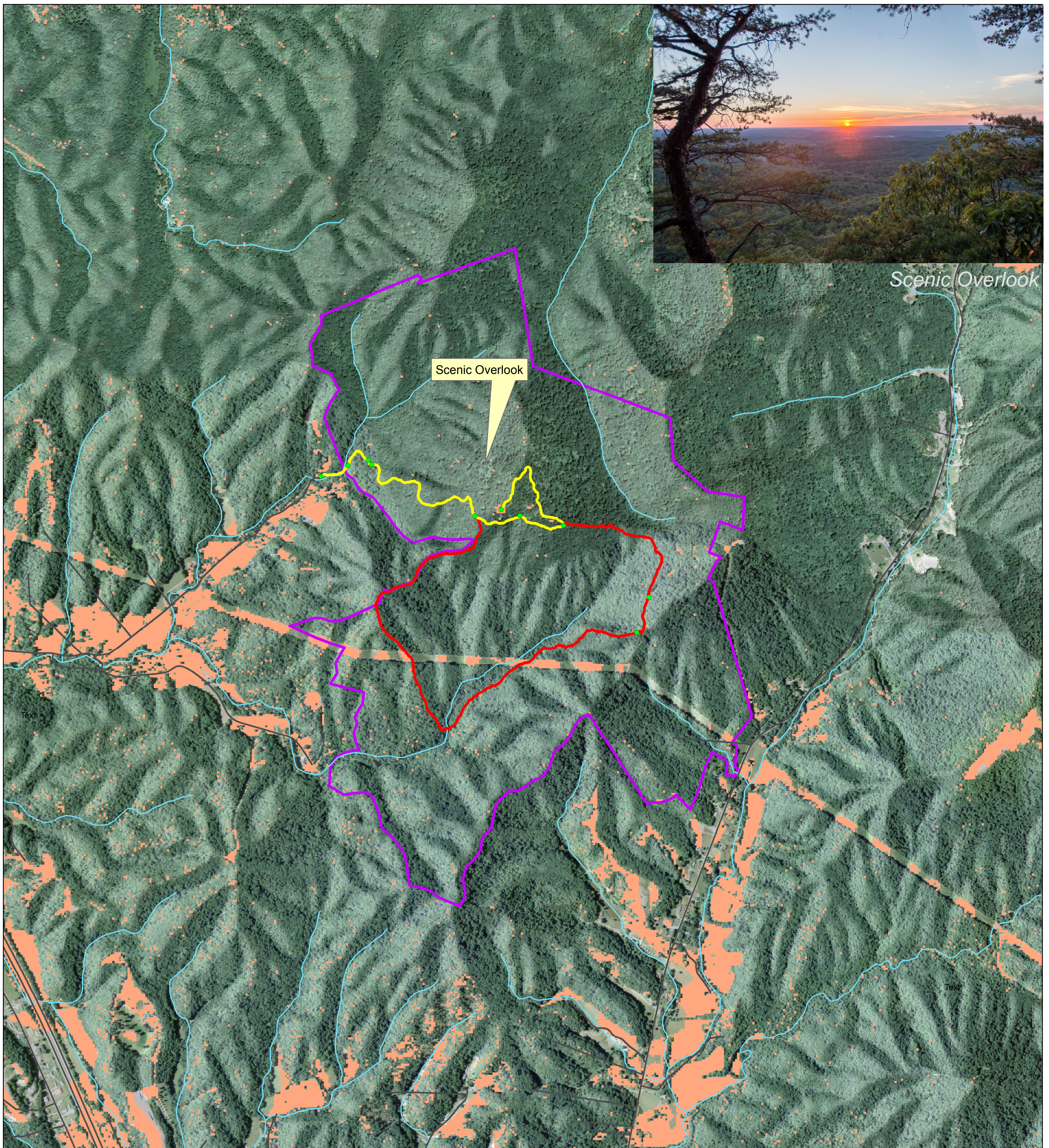


# Pilot Knob State Nature Preserve






Map By: Rachel Pagano  
NRE 355- Fall 2016

## Trails and Scenic Views

Kentucky State Plane Single Zone Coordinate System



### Legend

-  Pilot Knob Park Area
-  Pilot Knob Overlook Trail (1.24 mi)
-  Sage Point Trail (2.0 mi)
-  roads
-  Sunset Visible



This map was created using a handheld geospatial mapping application on an iPhone 6 plus on September 21, 2016. After recording movements on a hike through the trails, the data was transferred to a map editing program where the recorded trail was edited for accuracy. A 10m DEM layer was added to create a Hillshade showing the inclines and declines in elevation of the area on and around the trail. Using a 1m NAIP layer from 2014, an NDVI was created to show the areas where the tree canopy cover in the park is this or absent. A second Hillshade was then created to determine what areas of the knob are illuminated by a setting sun. Using a raster calculator an additional layer showing areas that have both no canopy cover and are illuminated by a setting sun, meaning an actual view of the sunset should be visible in these areas, was added and referred to as a scenic index.

